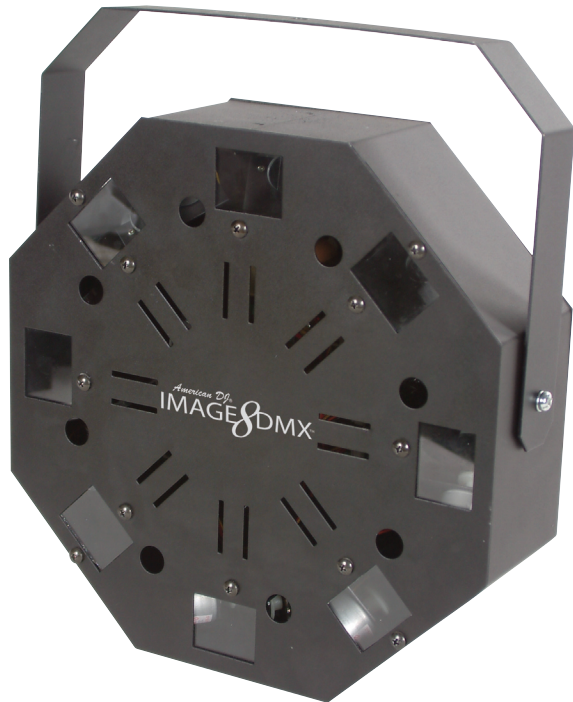


American DJ® IMAGE 8 DMX™



User Instructions

American DJ®
4295 Charter Street
Los Angeles, CA. 90058
www.americandj.com

Image 8 DMX™

General Introduction

Unpacking: Thank you for purchasing the Image 8 DMX™ by American DJ®. Every Image 8 DMX™ has been thoroughly tested and has been shipped in perfect operating condition. Carefully check the shipping carton for damage that may have occurred during shipping. If the carton appears to be damaged, carefully inspect your unit for any damage and be sure all equipment necessary to operate the system has arrived intact. In the event damage has been found or parts are missing, please contact our toll free customer support number for further instructions. Please do not return the unit to your dealer without first contacting customer support.

Introduction: The Image 8 DMX™ is a unique three channel, DMX intelligent, eight beam red laser effect that creates several different patterns over a wide area. This unit can be used as a stand alone, sound-active unit or in a Master/Slave configuration. The unit can also be controlled via DMX controller. The unit's sound sensitivity may be adjusted by a sensitivity knob on the rear of the unit. *For best results use fog or special effects smoke to enhance the beams projections.*

Customer Support: American DJ® provides a toll free customer support line, to provide set up help and to answer any question should you encounter problems during your set up or initial operation. You may also visit us on the web at www.americandj.com for any comments or suggestions. For service related issue please contact American DJ®. Service Hours are Monday through Friday 9:00 a.m. to 5:00 p.m. Pacific Standard Time.

Voice: (800) 322-6337
Fax: (323) 582-2610
E-mail: support@americandj.com

Warning! To prevent or reduce the risk of electrical shock or fire, do not expose this unit to rain or moisture.

Caution! There are no user serviceable parts inside this unit. Do not attempt any repairs yourself, doing so will void your manufactures warranty. In the unlikely event your unit may require service please contact your nearest American DJ dealer.

PLEASE do not discard the shipping carton in the trash. Please recycle when ever possible.

Image 8 DMX™

General Instructions

Please carefully read and understand the instructions in this manual thoroughly before attempting to operate this unit. These instructions contain important safety information regarding the use and maintenance of this unit. Please keep this manual with the unit, for future reference.

CAUTION IMPORTANT! When installing this projector, make sure that it is mounted in a manner that prevents the audience from looking directly into the beam, and the beam from striking the audience.

Image 8 DMX™

Features

- 4.9mW Red Laser Diode
- 8 Separate Lasers
- Sound Active with Internal Microphone
- DMX-512 Protocol Compatible
- 3 Channels
- Master/Slave Operation
- 14 Patterns
- Volume Sensitivity Knob

Image 8 DMX™

Warranty Registration

The Image 8 DMX™ carries a 90 day limited warranty. Please fill out the enclosed warranty card to validate your purchase. All returned service items whether under warranty or not, must be freight pre-paid and accompany a return authorization (R.A.) number. The R.A. number must be clearly written on the outside of the return package. A brief description of the problem as well as the R.A. number must also be written down on a piece of paper included in the shipping carton. If the unit is under warranty, you must provide a copy of your proof of purchase invoice. You may obtain a R.A. number by contacting our customer support team on our toll free customer support number. All packages returned to the service department not displaying a R.A. number on the outside of the package will be returned to the shipper.

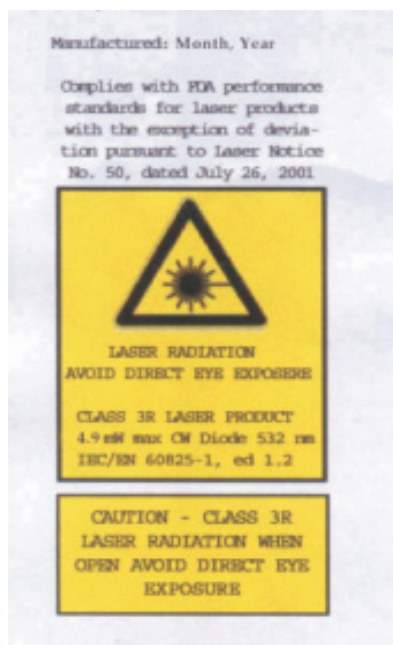
Image 8 DMX™

Safety Precautions



Safety Issues: This unit may pop the breaker if the maximum allotted load of 2 amps is reached.

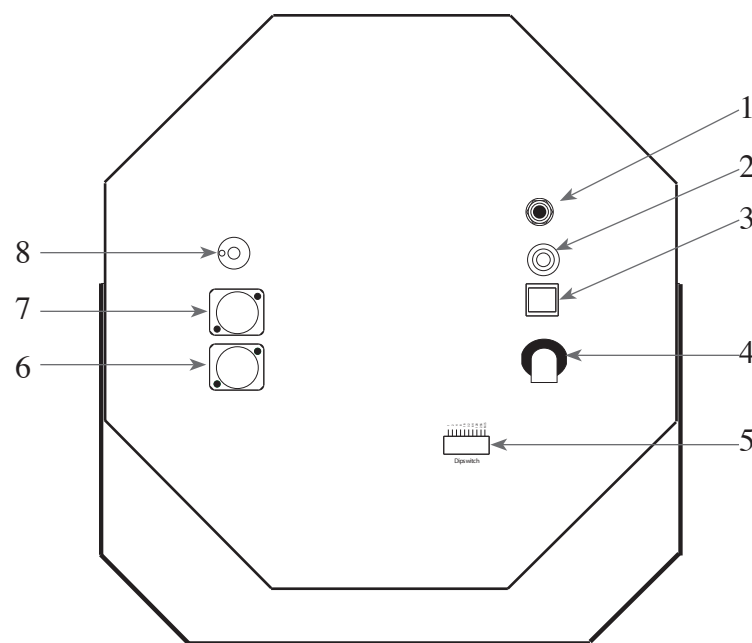
- To reduce the risk of electrical shock or fire, do not expose this unit rain or moisture.
- Do not spill water or other liquids into or on to your unit.
- Do not attempt to remove or break off the ground prong from the electrical cord. This prong is used to reduce the risk of electrical shock and fire in case of an internal short. Do not attempt to operate this unit if the power cord has been frayed or broken.
- Disconnect from main power before making any type of connection.
- Do not remove the cover under any conditions. There are no user serviceable parts inside.
- Always be sure to mount this unit in an area that will allow proper ventilation. Allow about 6" (15cm) between this device and a wall.
- Do not attempt to operate this unit, if it becomes damaged.
- This unit is intended for indoor use only, use of this product outdoors voids all warranties.
- During long periods of non-use, disconnect the unit's main power.
- Always mount this unit in safe and stable matter.
- Power cords should be routed so they are not likely to be walked on, pinched by items placed upon or against them.
- Cleaning -The fixture should be cleaned only as recommended by the manufacturer. See page 6 for cleaning details.
- Heat -The appliance should be situated away from heat sources such as radiators, heat registers, stoves, or other appliances (including amplifiers) that produce heat.
- The fixture should be serviced by qualified service personnel when:
 - A. The power-supply cord or the plug has been damaged.
 - B. Objects have fallen on, or liquid has been spilled into the unit.
 - C. The unit has been exposed to rain or water.
 - D. The unit does not appear to operate normally or exhibits a marked change in performance.



Laser Aperture

CAUTION - CLASS 3R
LASER RADIATION WHEN OPEN
AVOID DIRECT EYE EXPOSURE

CAUTION IMPORTANT! When installing this projector, make sure that it is mounted in a manner that prevents the audience from looking directly into the beam, and the beam from striking the audience.



1. Remote Controller Input - This input uses a 1/4" (6.3mm) micro-phon jack. The optional blackout controller plugs in here and is used to control the first unit, and other units if linked together. It controls stand by and blackout function.

2. Microphone - This microphone receives external low frequencies to trigger the unit in Sound-Active mode. This microphone is designed to receive low frequency sounds only, tapping on the microphone and high pitch sounds may not trigger the unit.

3. Breaker - A 2A built-in safety breaker to reduce the risk of electrical shock or fire and protect the circuitry. In the case of a internal short or power surge.

4. Power Cord - This cord is used to supply main power to the fixture. Be sure the main power matches the required power of your fixture. The rated power requirements are clearly marked on the rear panel of the unit.

5. Dip Switches - These switches serve two functions. In master-slave mode these switches are used to assign a specific head address. In DMX mode these switches are used to assign a DMX address to the unit. In DMX mode each switch corresponds to a specific value based on binary code. See pages 8-9 for a detailed explanation of DMX binary code.

6. XLR Output Jack - This female output jack is used to transmit the incoming DMX signal to another DMX fixture, or transmit a Master/Slave signal to the next Image 8 DMX™ in the chain. For best results in DMX or Master/Slave mode terminate this jack if it is the last unit in the chain. See “Terminator” on page 10.

7. XLR Input Jack - This male input jack is used to accept an incoming DMX signal or Master/Slave signal.

8. Audio Sensitivity Knob - This adjusts the audio sensitivity of the internal microphone (1). Turning the sensitivity knob in the clockwise direction will increase the sensitivity to sound. Turning the knob in the counter clockwise direction will decrease the fixture’s sensitivity to sound. If the knob is turned completely in the counter-clockwise direction the sound sensitivity function will turn off.

Power Supply: Before plugging your unit in, be sure the source voltage in your area matches the required voltage for your American DJ® Image 8 DMX.™ The American DJ® Image 8 DMX™ is 120v only. Because line voltage may vary from venue to venue, you should be sure your unit voltages matches the wall outlet voltage before attempting to operate you fixture.

DMX-512: *DMX is short for Digital Multiplex. This is a universal protocol used as a form of communication between intelligent fixtures and controllers. A DMX controller sends DMX data instructions from the controller to the fixture. DMX data is sent as serial data that travels from fixture to fixture via the DATA “IN” and DATA “OUT” XLR terminals located on all DMX fixtures (most controllers only have a DATA “OUT” terminal).*

DMX Linking: DMX is a language allowing all makes and models of different manufactures to be linked together and operate from a single controller, as long as all fixtures and the controller are DMX compliant. *To ensure proper DMX data transmission, when using several DMX fixtures try to use the shortest cable path possible. The order in which fixtures are connected in a DMX line does not influence the DMX addressing. For example; a fixture assigned a DMX address of 1 may be placed anywhere in a DMX line, at the beginning, at the end, or anywhere in the middle. When a fixture is assigned a DMX address of 1, the DMX controller knows to send DATA assigned to address 1 to that unit, no matter where it is located in the DMX chain.*

Dipswitches in DMX mode: This unit uses dipswitches to assign a DMX address. Each dipswitch represents a binary value.

Dipswitch 1 address equals 1

Dipswitch 2 address equals 2

Dipswitch 3 address equals 4

Dipswitch 4 address equals 8

Dipswitch 5 address equals 16

Dipswitch 6 address equals 32

Dipswitch 7 address equals 64

Dipswitch 8 address equals 128

Dipswitch 9 address equals 256

Dipswitch 10 - Some units omit dipswitch 10. When a unit does include dipswitch #10, it is usually used for special functions such as

sound activation.

Assigning DMX Address: Each dipswitch has a preset value. A specific DMX address is set by combining the dipswitches that sum your desired value. For example: To achieve a DMX address of 7, combine dipswitches 1, 2, and 3. Since dipswitch 1 has a value of 1, dipswitch 2 has a value of 2, and dipswitch 3 has a value of 4, the combination of the three create a DMX value of 7. (See example below).

Set DMX address 1:	Set DMX address 7:	
Dip-switches # 1 = 1	Dip-switches # 1 = 1	1 = 1
		2 = 2
		3 = 4
		= 7

Data Cable (DMX Cable) Requirements (For DMX and Master/Slave Operation): The Image 8 DMX™ can be controlled via DMX-512 protocol. The Image 8 DMX™ is a three channel DMX unit. The DMX address is set on the side panel of the Image 8 DMX™. Your unit and your DMX controller require a standard 3-pin XLR connector for data input and data output (Figure 1). If you are making your own cables, be sure to use standard two conductor shielded cable (This cable may be purchased at almost all pro sound and lighting stores). Your cables should be made with a male and female XLR connector on either end of the cable. Also remember that DMX cable must be daisy chained and can not be split.

Notice: Be sure to follow figures two and three when making your own cables. Do not use the ground lug on the XLR connector. Do not connect the cable's shield conductor to the ground lug or allow the shield conductor to come in contact with the XLR's outer casing. Grounding the shield could cause a short circuit and erratic behavior.

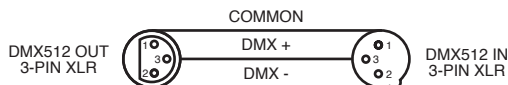


Figure 2

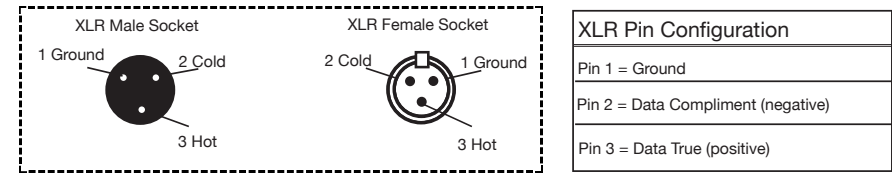


Figure 3

Special Note: Line Termination. When longer runs of cable are used, you may need to use a terminator on the last unit to avoid erratic behavior. A terminator is a 90-120 ohm 1/4 watt resistor which is connected between pins 2 and 3 of a male XLR connector (DATA + and DATA -). This unit is inserted in the female XLR socket of the last unit in your daisy chain to terminate the line. Using a cable terminator (ADJ part number Z-DMX/T) will decrease the possibilities of erratic behavior.



Termination reduces signal errors and avoids signal transmission problems and interference. It is always advisable to connect a DMX terminal, (Resistance 120 Ohm 1/4 W) between PIN 2 (DMX-) and PIN 3 (DMX +) of the last fixture.

Figure 4

5-Pin XLR DMX Connectors. Some manufactures use 5-pin XLR connectors for DATA transmission in place of 3-pin. 5-pin XLR fixtures may be implemented in a 3-pin XLR DMX line. When inserting standard 5-pin XLR connectors in to a 3-pin line a cable adaptor must be used, these adaptors are readily available at most electric stores. The chart below details a proper cable conversion.

3-Pin XLR to 5-Pin XLR Conversion		
Conductor	3-Pin XLR Female (Out)	5-Pin XLR Male (In)
Ground/Shield	Pin 1	Pin 1
Data Compliment (- signal)	Pin 2	Pin 2
Data True (+ signal)	Pin 3	Pin 3
Not Used		Pin 4 - Do Not Use
Not Used		Pin 5 - Do Not Use

Power Supply: This unit is available only in 120v. Before plugging your unit in be sure the source voltage in your area matches the required voltage for your American DJ® Image 8 DMX.™

General Operation: This fixture is designed to operate as a stand alone, sound-active unit, or in a Master/Slave configuration. It can also operate via DMX controller. The Image 8 DMX™ is ready to be plugged in out of the box. There is no power switch, after plugging the unit into a power outlet the lasers will immediately begin to cycle through the many built in patterns (provided dipswitch #10 is in the “ON” position, and there is an ample amount of sound to trigger the unit). The unit comes with several built-in patterns that automatically cycle through when the unit is operating, the patterns may not be selected manually. If the unit does not turn on after the unit has been plugged in, be sure the breaker has not popped and the unit is properly plugged in to a matching wall outlet. If the problem continues to persist, please contact customer support for further instructions.

Sensitivity Knob: A sound sensitivity knob is located on the rear of the unit. Use this knob to regulate the amount of sound it takes to trigger the unit. Turning the knob in a clockwise direction will increase the units sensitivity to sound, turning the knob in a counterclockwise direction will decrease the units sensitivity. Turning the knob completely to the counter-clockwise direction will turn off the sound-active mode.

Operating Modes:

Universal DMX Control: This mode allows you to use a universal DMX-512 controller such as the American DJ® DMX Operator™ or Show Designer.™

1. To control your fixture in DMX mode, follow the set-up procedures on pages 6 - 8 as well as the set-up procedures included with your DMX controller.
2. For longer cable runs (more than a 100 feet) use a terminator on the last fixture.
3. Assign a DMX address to the unit by following the dipswitch chart on page 15.
4. The Image 8 DMX™ uses three DMX channels. See page 14 for detailed description of the DMX traits. Use your DMX controller to

activate the various built-in patterns.

5. For help operating in DMX mode consult the manual included with your DMX controller.

NOTE: If running in Master/Slave configuration while using a DMX controller, the Master unit should have all dipswitches set to the “OFF” position. All slave units should have dipswitch #1 set to the “ON” position.

Stand-Alone Operation (Sound Active): This mode allows a unit to run to the beat of the music. Only use this mode when running a single unit, or when running several units as individuals.

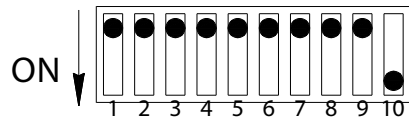
1. Set dipswitch #1 and #10 to the “ON” position to activate Stand-Alone.
2. The unit will react to the low frequencies of music via the internal microphone.
3. Use the audio sensitivity knob on the side of the unit to make the unit more or less sensitive to sound. Turning the sensitivity knob in the clockwise direction will increase the sensitivity, turning the knob in the counter-clockwise direction will decrease the fixture’s sensitivity to sound.

Master-Slave Operation (Sound Active): This mode will allow you to link up to 16 units together and operate without a controller. In Master-Slave mode, the units will react to sound. In Master-Slave operation one unit will act as the controlling unit and the others will react to the controlling units programs. Any unit can act as a Master or as a Slave.

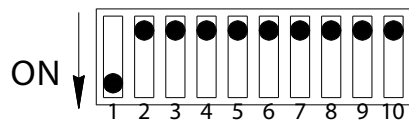
1. Using standard XLR microphone cables, daisy chain your units together via the XLR connector on the rear of the units. Remember the Male XLR connector is the input and the Female XLR connector is the output. For longer cable runs we suggest a terminator at the last fixture.
2. Choose a unit to function as the Master and set dipswitch #10 to the “ON” position. This unit must be the first unit in line. Then simply daisy chain the units together using XLR cables.
3. Turn dipswitch #1 to the “ON” position on the SLAVE units, and they will react the same as the MASTER.
4. Use the sensitivity knob on the back of the master unit to make

it more or less sensitive to sound.

Master/Slave Chart



MASTER



SLAVE

CAUTION IMPORTANT! When installing this projector, make sure that it is mounted in a manner that prevents the audience from looking directly into the beam, and the beam from striking the audience.

DMX Channels & Traits

Function		Laser Light	Picture	
255	Sound Active	255	255	Picture15-Circle
238-254	Function14	Fig.1	238-254	Picture14-
221-237	Function13		221-237	Picture13-
204-220	Function12		204-220	Picture12-
187-203	Function11		187-203	Picture11-
170-186	Function10		170-186	Picture10-
153-169	Function9		153-169	Picture9-
136-152	Function8		136-152	Picture8-
119-135	Function7		119-135	Picture7-
102-118	Function6		102-118	Picture6-
85-101	Function5		85-101	Picture5-
68-84	Function4		68-84	Picture4-
51-67	Function3		51-67	Picture3-
34-50	Function2		34-50	Picture2-
17-33	Function1		17-33	Picture1-
00-16	CH2~ CH3		00	00
00		00	Black - 00	
	CH1		CH2	CH3

90 DAY LIMITED WARRANTY

A. American DJ® hereby warrants, to the original purchaser, American DJ® products to be free of manufacturing defects in material and workmanship for a period of 90 days from the date of purchase. This warranty shall be valid only if the product is purchased within the United States of America, including possessions and territories. It is the owner's responsibility to establish the date and place of purchase by acceptable evidence, at the time service is sought.

B. For warranty service, send the product only to the American DJ® factory. All shipping charges must be pre-paid. If the requested repairs or service (including parts replacement) are within the terms of this warranty, American DJ® will pay return shipping charges only to a designated point within the United States. If the entire instrument is sent, it must be shipped in its original package. No accessories should be shipped with the product. If any accessories are shipped with the product, American DJ® shall have no liability whatsoever for loss of or damage to any such accessories, nor for the safe return thereof.

C. This warranty is void if the serial number has been altered or removed; if the product is modified in any manner which American DJ® concludes, after inspection, affects the reliability of the product; if the product has been repaired or serviced by anyone other than the American DJ® factory unless prior written authorization was issued to purchaser by American DJ®; if the product is damaged because not properly maintained as set forth in the instruction manual.

D. This is not a service contract, and this warranty does not include maintenance, cleaning or periodic check-up. During the period specified above, American DJ® will replace defective parts at its expense, and will absorb all expenses for warranty service and repair labor by reason of defects in material or workmanship. The sole responsibility of American DJ® under this warranty shall be limited to the repair of the product, or replacement thereof, including parts, at the sole discretion of American DJ®. All products covered by this warranty were manufactured after January 1, 1990, and bear identifying marks to that effect.

E. American DJ® reserves the right to make changes in design and/or improvements upon its products without any obligation to include these changes in any products theretofore manufactured.

F. No warranty, whether expressed or implied, is given or made with respect to any accessory supplied with products described above. Except to the extent prohibited by applicable law, all implied warranties made by American DJ® in connection with this product, including warranties of merchantability or fitness, are limited in duration to the warranty period set forth above. And no warranties, whether expressed or implied, including warranties of merchantability or fitness, shall apply to this product after said period has expired. The consumer's and or Dealer's sole remedy shall be such repair or replacement as is expressly provided above; and under no circumstances shall American DJ® be liable for any loss or damage, direct or consequential, arising out of the use of, or inability to use, this product.

G. This warranty is the only written warranty applicable to American DJ® Products and supersedes all prior warranties and written descriptions of warranty terms and conditions heretofore published.

H. All lamps and fuses are not covered under this warranty.

Model: Image 8 DMX™

Voltage:	120v~60Hz or 220v~50Hz
Laser:	4.9mW Red
Breaker:	2A
Dimensions:	13.3" (L) x 3.5" (W) x 13.7" (H)
Weight:	9 Lbs.
Duty Cycle:	None
Warranty:	90 Days

Please Note: Specifications and improvements in the design of this unit and this manual are subject to change without any prior written notice.

©American DJ®

American DJ World Headquarters:
4295 Charter Street Los Angeles, CA 90058 USA

Tel: 323-582-2650 / Fax: 323-582-2610

Web: www.americandj.com / E-mail: info@americandj.com